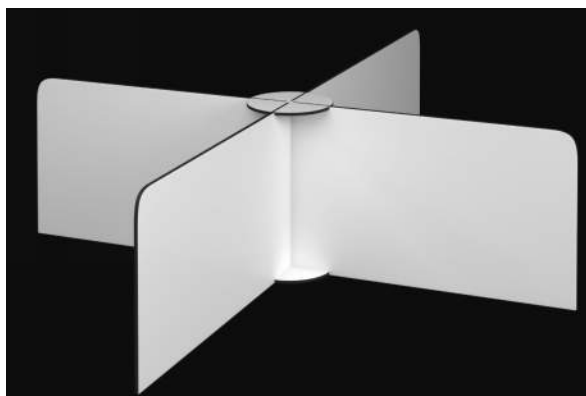




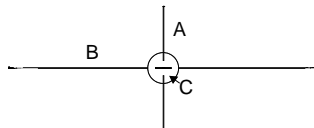
### STANDARD SIZES

PART	MIN DIM.	MAX DIM.
A	48" x 24"	96" x 24"
B	60" x 24"	96" x 24"
C	12" Diameter	12" Diameter
D	12" x 18"	12" x 18"

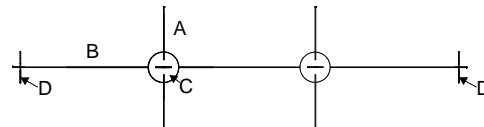


Quad Station shown above.

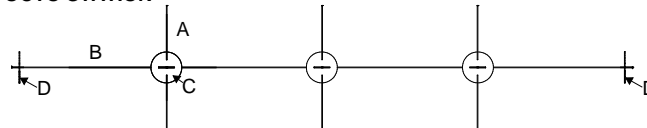
#### QUAD STATION



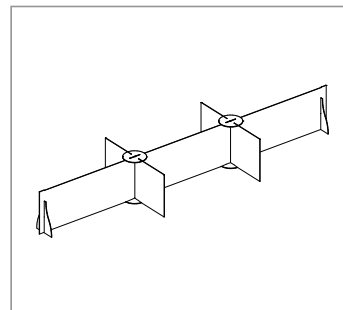
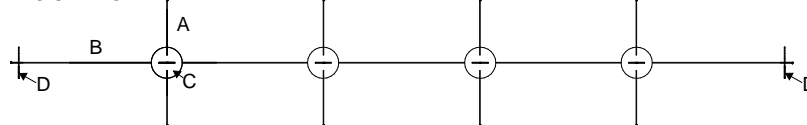
#### HEX STATION



#### OCTO STATION



#### DEC STATION



### SPECIFICATION

Table Top Safe Screen shall be Model **TTFS4-244896C14E0-00**, 24" (610mm) High x 48" (1219mm) Wide x 96" (2438mm) Deep with 12" (305mm) support caps and 12" (305mm) x 18" (457mm) feet (on Hex Station and larger), made entirely of 1/4" (6mm) Trespa Toplab Base, double-sided, designed for easy mounting on any table top. Easy 'click' assembly with no tools required. Standard color shall be Trespa E0-00 white. Tested to SEFA 3 (horizontal surfaces) and SEFA 8 (vertical surfaces) for chemical resistance. 10-year conditional warranty. Manufactured by Spectrum Lockers. (spectrumlockers.com)

### MATERIALS

Table Top Safe Screen, Free Standing, 1/4" (6mm) thick Trespa Toplab Base, laboratory grade, high pressure compact laminate, fabricated with natural fibres and thermosetting resins, Greenguard Gold Certified. Trespa International B.V. is a member of SEFA (Scientific Equipment and Furniture Association) and VIP3000 (Association for Cleanrooms and Pharmaceutical Construction). Excellent resistance to most aggressive chemicals and cleaning agents. Weight: Quad: approximately 72lb, Hex: approximately 87lb, Octo: approximately 105lb, Dec: approximately 123lb.

### ASSEMBLY & OPERATION

Easy click assembly with no tools required. Designed for easy mounting on any table top.

### OPTIONS

☐ Trespa TopLab Vertical - with Patented Electron Beam Cured (EBC) technology. Does not support bacterial growth.

☐ Non-Standard Color: \_\_\_\_\_

Unit shall be: ☐ Quad ☐ Hex ☐ Oct ☐ Dec

With dimensions of: A \_\_\_\_\_, B \_\_\_\_\_, C \_\_\_\_\_

### VARIOUS SAFETY SCREENING PRODUCTS

View the complete collections: [www.spectrumlockers.com](http://www.spectrumlockers.com)